



Creating value

Operatørkonferansen, 11. Mars 2025

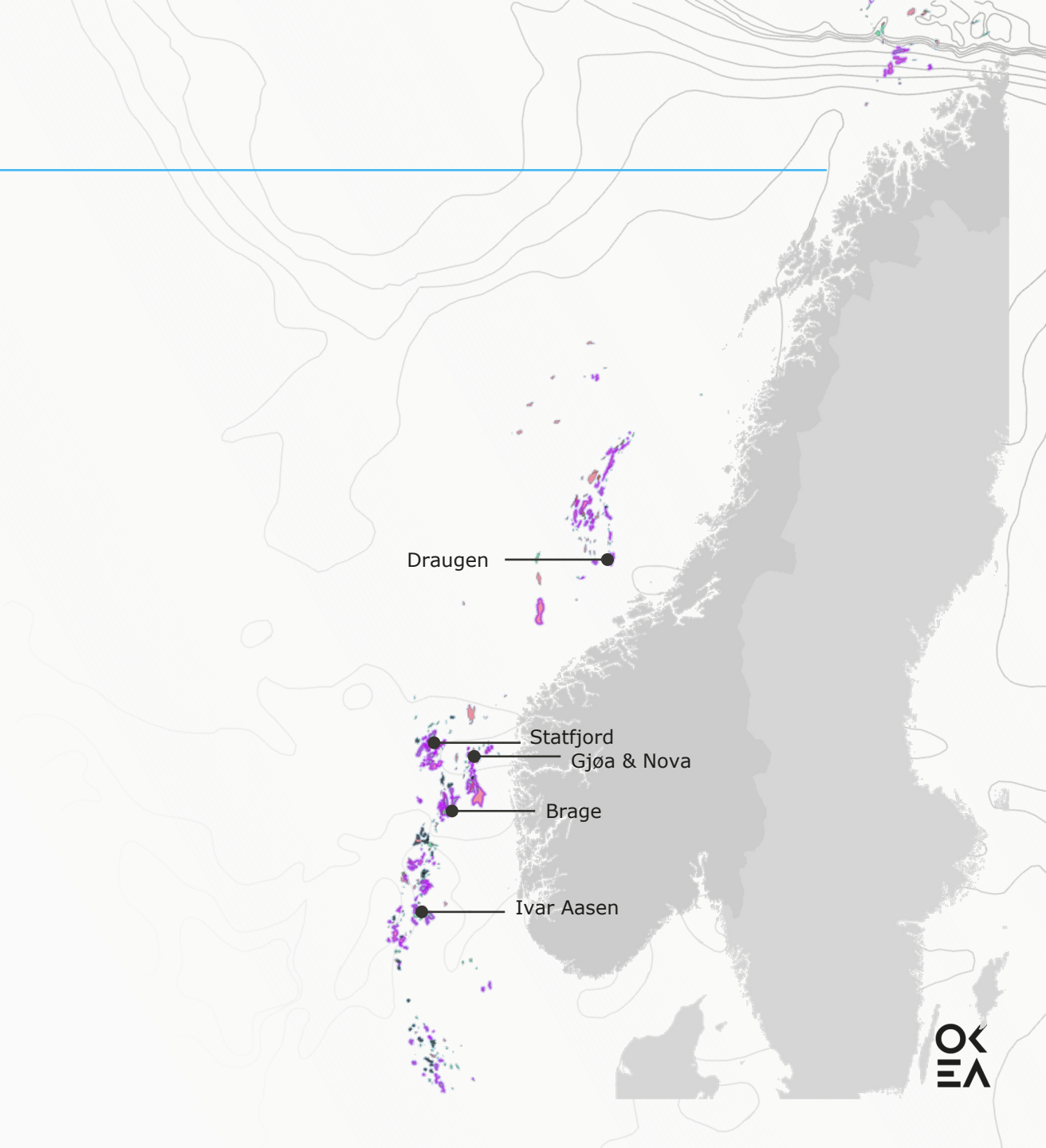
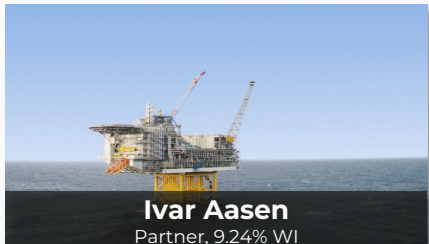
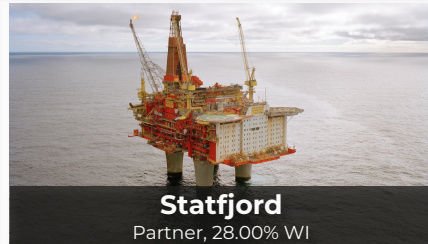


OKEA on NCS

Operated assets



Partner-operated assets



Our strategic priorities towards 2030

The leading mid- and late-life operator on the NCS



Safe and reliable
operations



Maximise value of assets



Build exploration portfolio



Grow inorganically

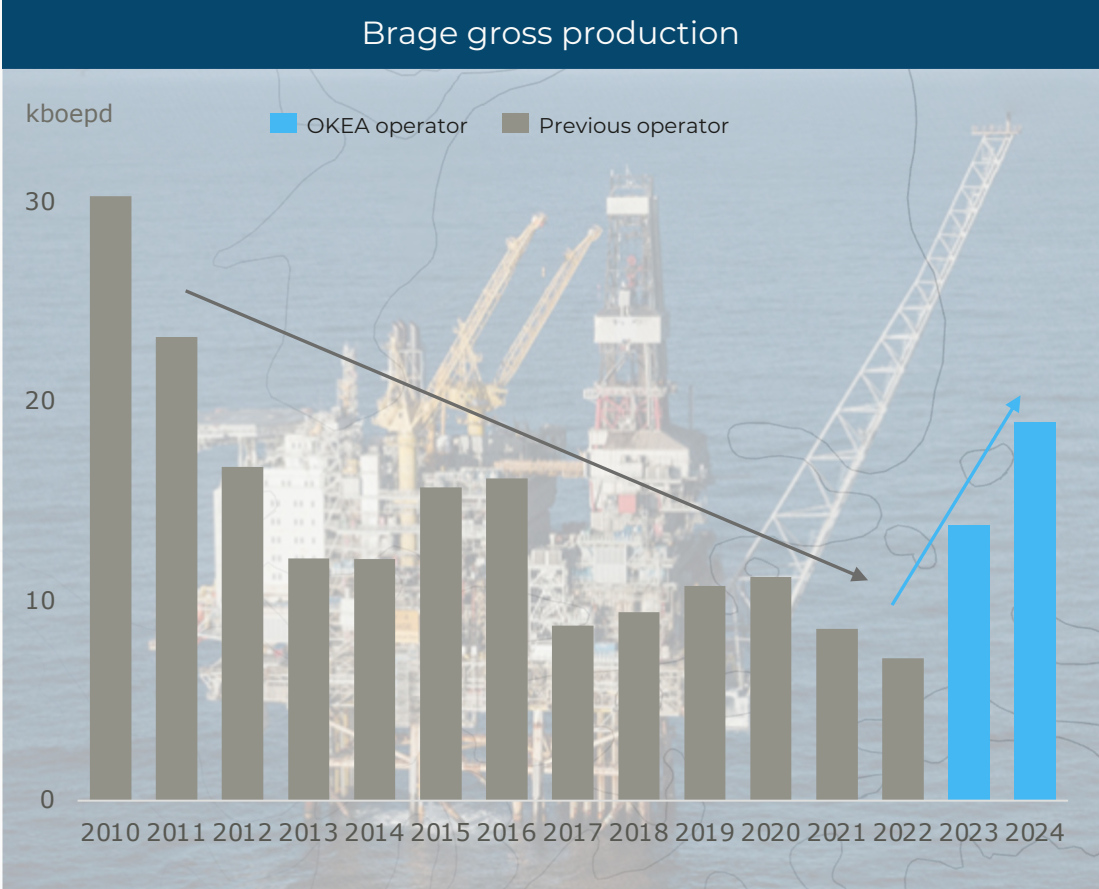
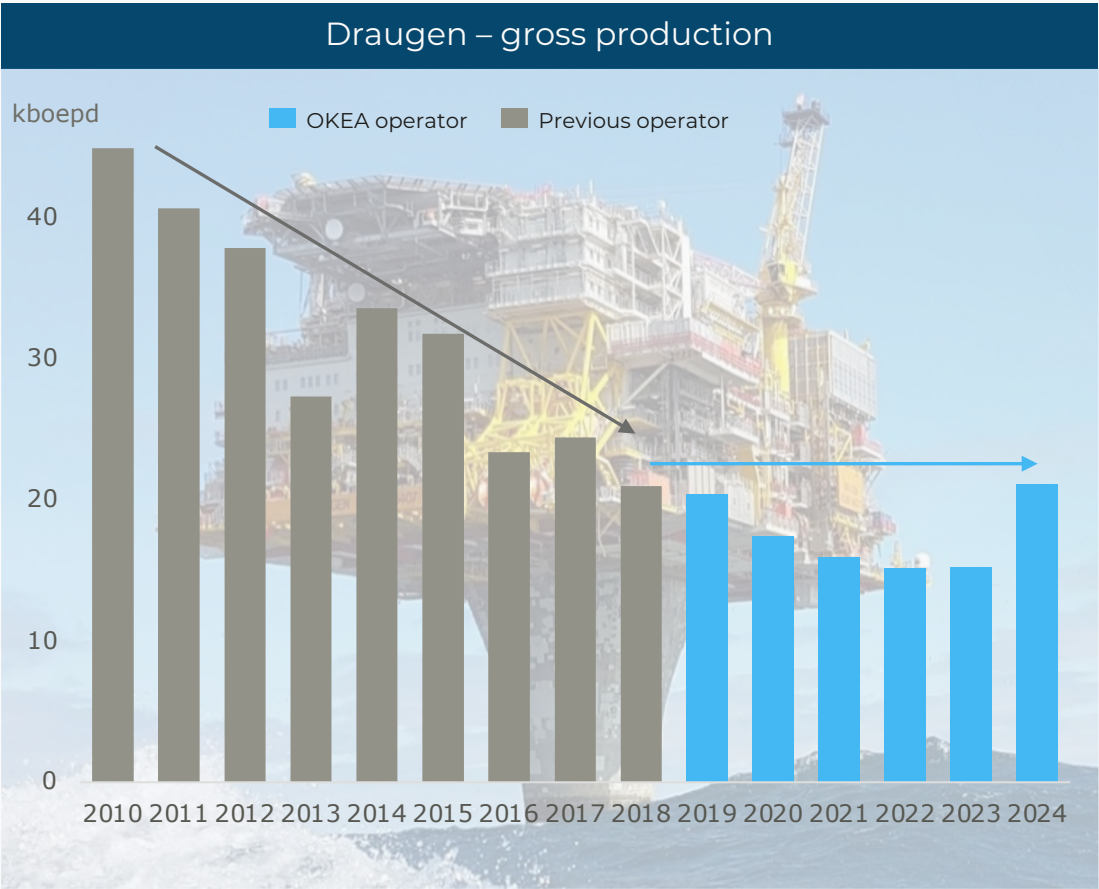
Growth | Value creation | Capital discipline

OKEA as Operator at Draugen and Brage

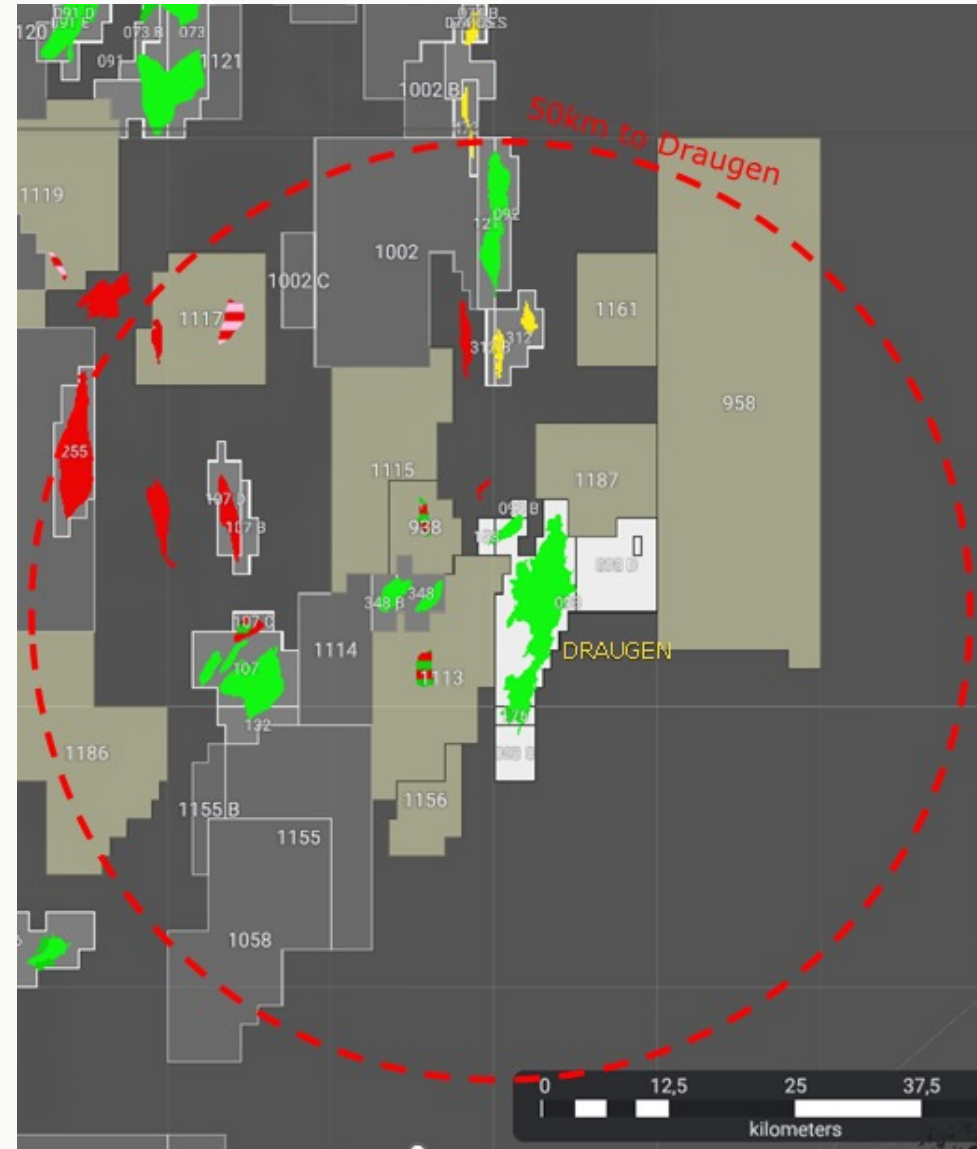
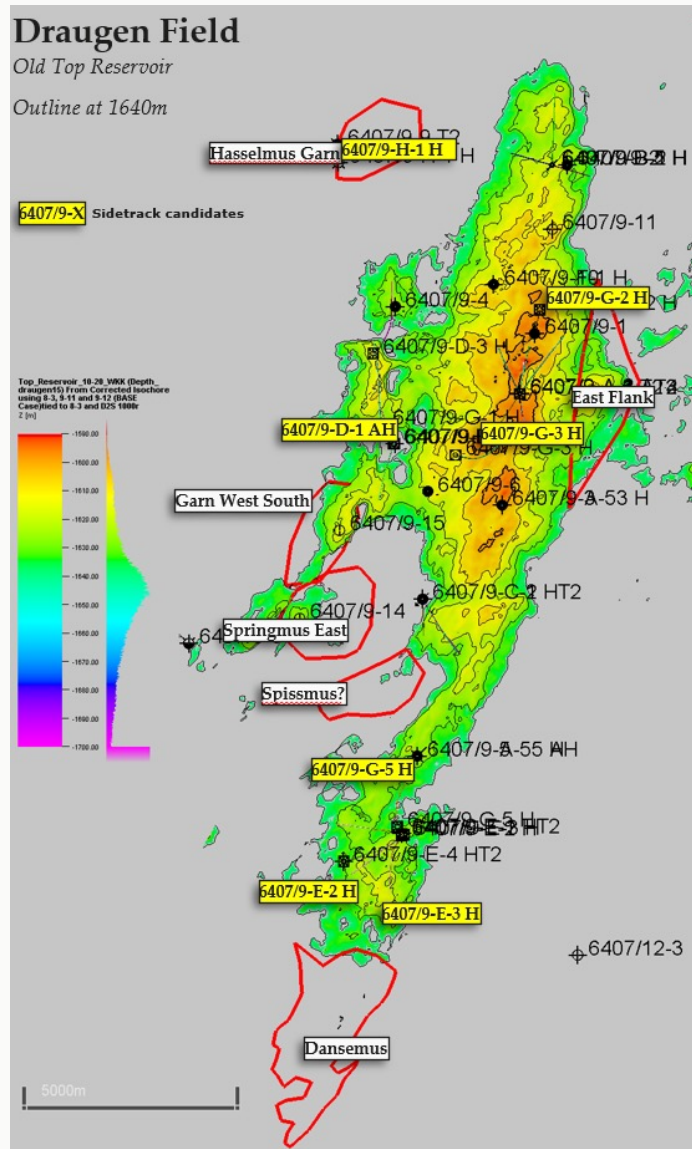


Creating value through active operatorship

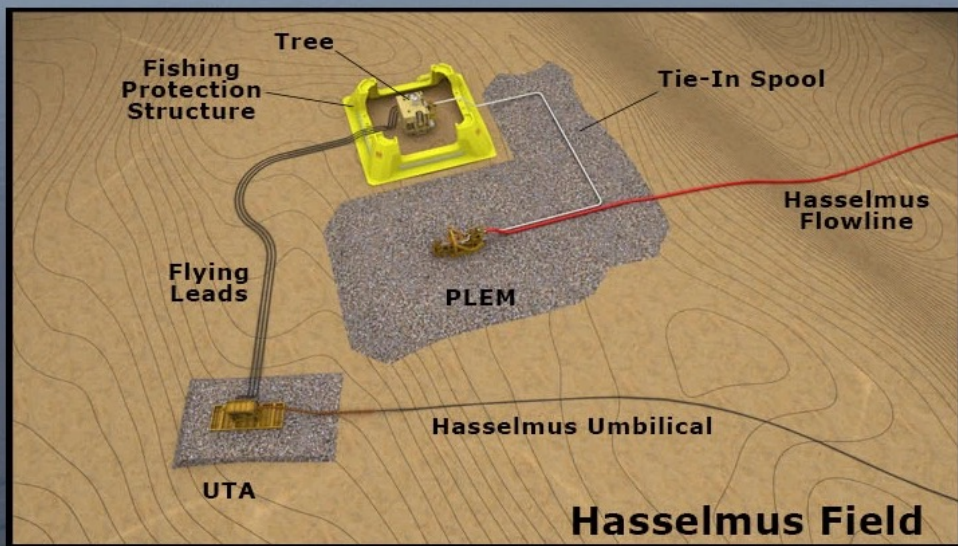
Efficiency improved and production increased



Draugen – license area and catchment area



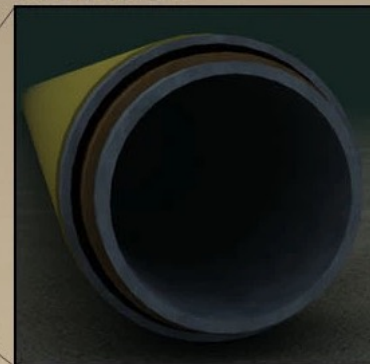
DRAUGEN Platform



G2 Field

To Gas Export Pipeline

Flowline



Vertical Monobore Xmas Tree (VMXT)

- 10k, 7 1/16" bore
- Production Guide Base (PGB)
- Wellhead (DW11) - 15k

Flowline - Gas Production, Pipe-in-Pipe: (8.6km)

- 12" Outer pipe, coated
- 6.5" Inner pipe w/316 liner (BUBI)
- Pipe Line End Manifold, 2-OSC100 H Connectors

Spool - rigid horizontal, OCS100 H connectors

Umbilical (6.2km)

- Umbilical Termination Assembly (UTA) Umsire D
- Power, signal (on power), MEOH, Hydraulics

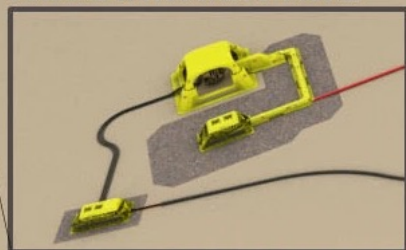
Controls

- Hydraulic flying leads
- Electrical flying leads
- Subsea Control Module and Topside controls

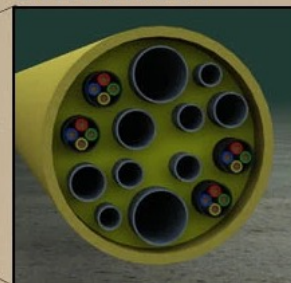
Protection

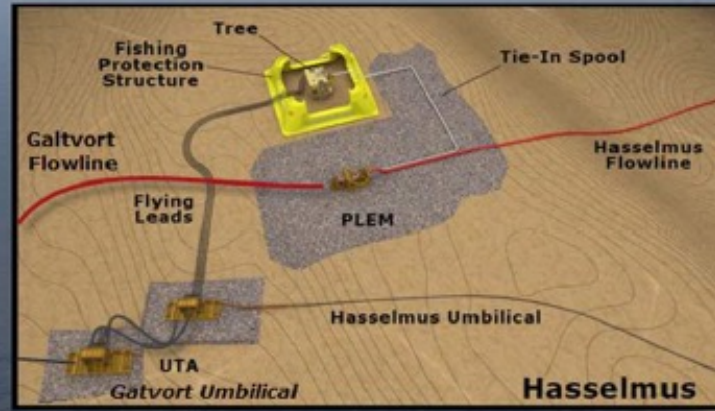
- Glass fibre covers for XT, spool, PLEM and UTAs
- Subsea Rock Installation for structures and lines

Hasselmus Field



Umbilical

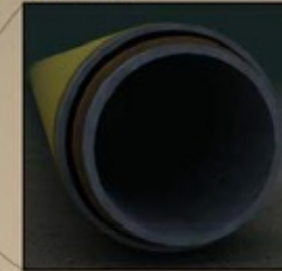




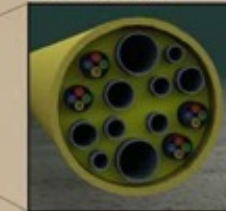
G2

To Gas Export Pipeline

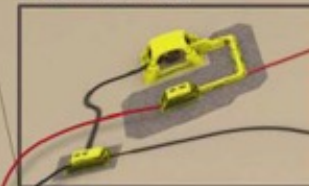
Flowline



Umbilical



Hasselmus



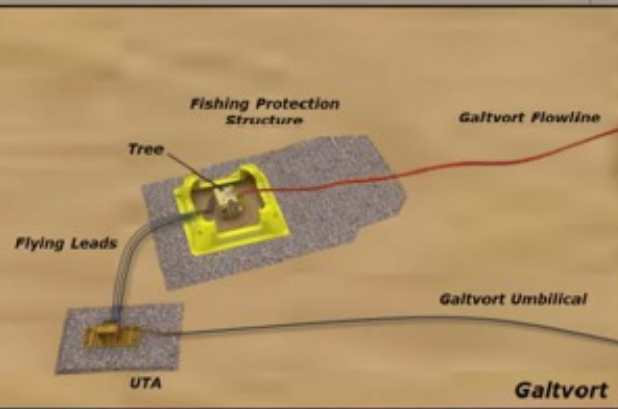
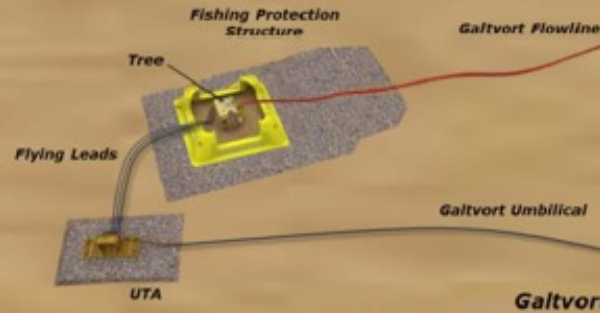
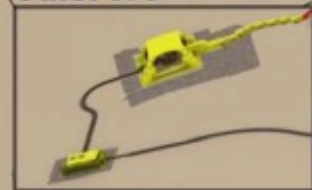
Umbilical



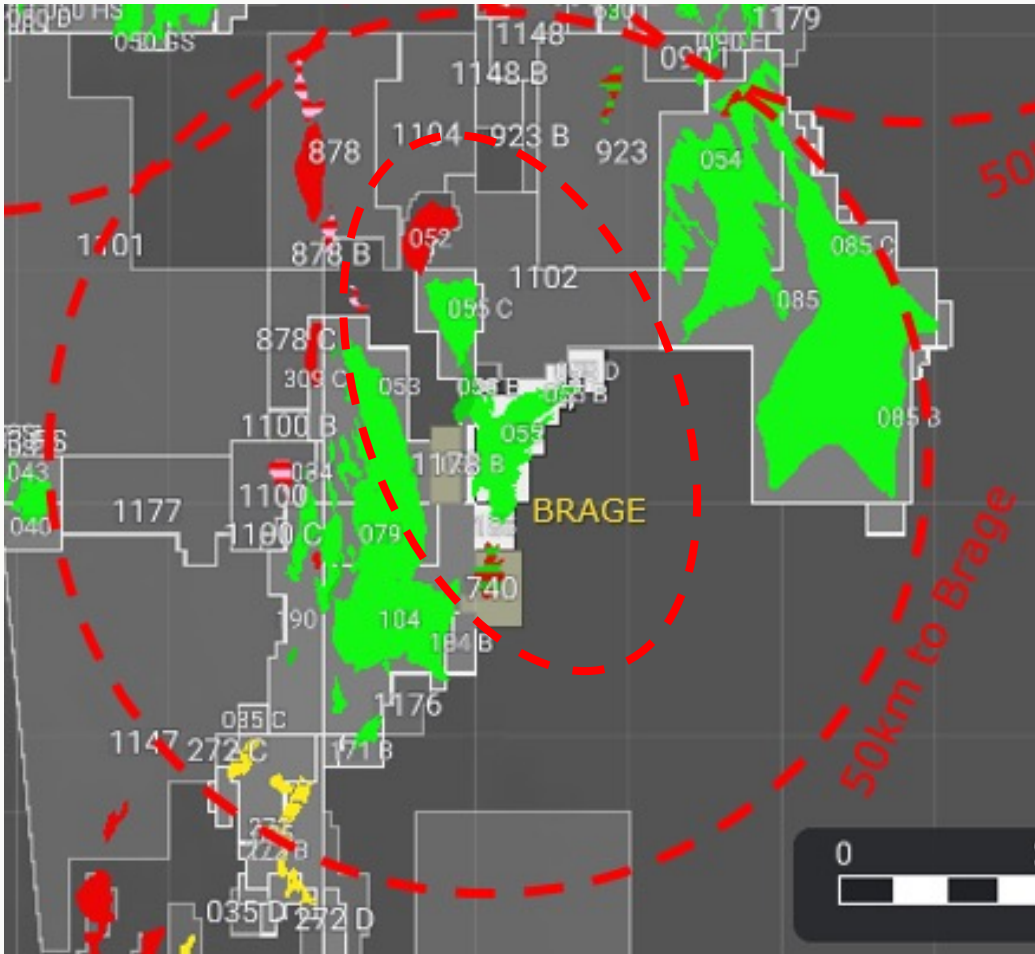
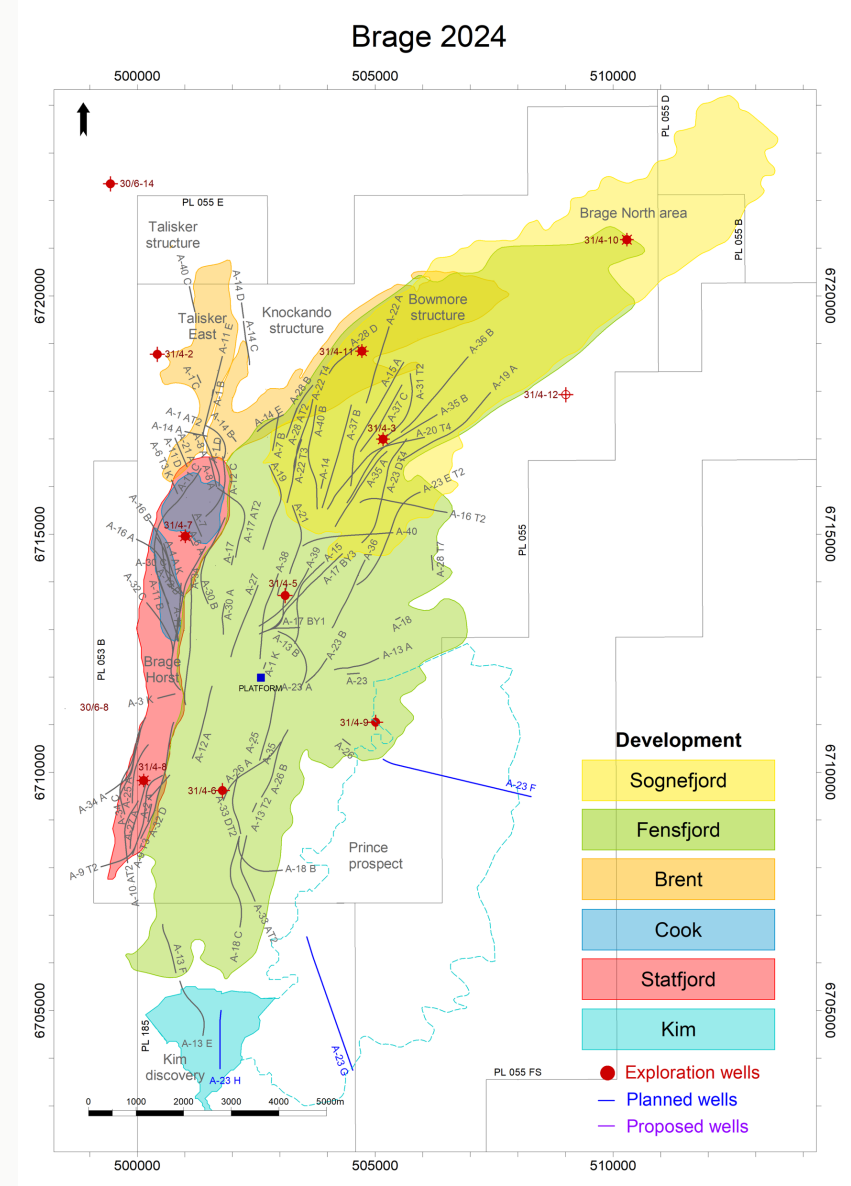
Flexible Flowline



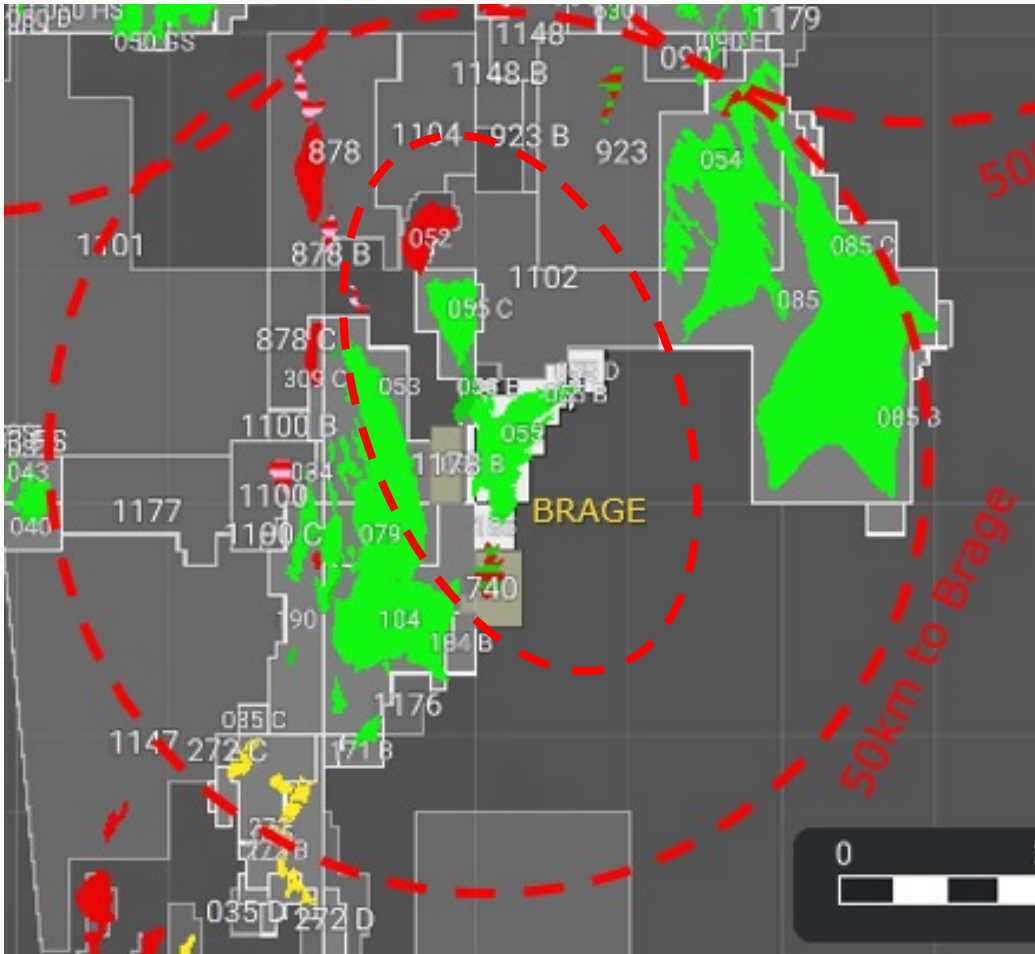
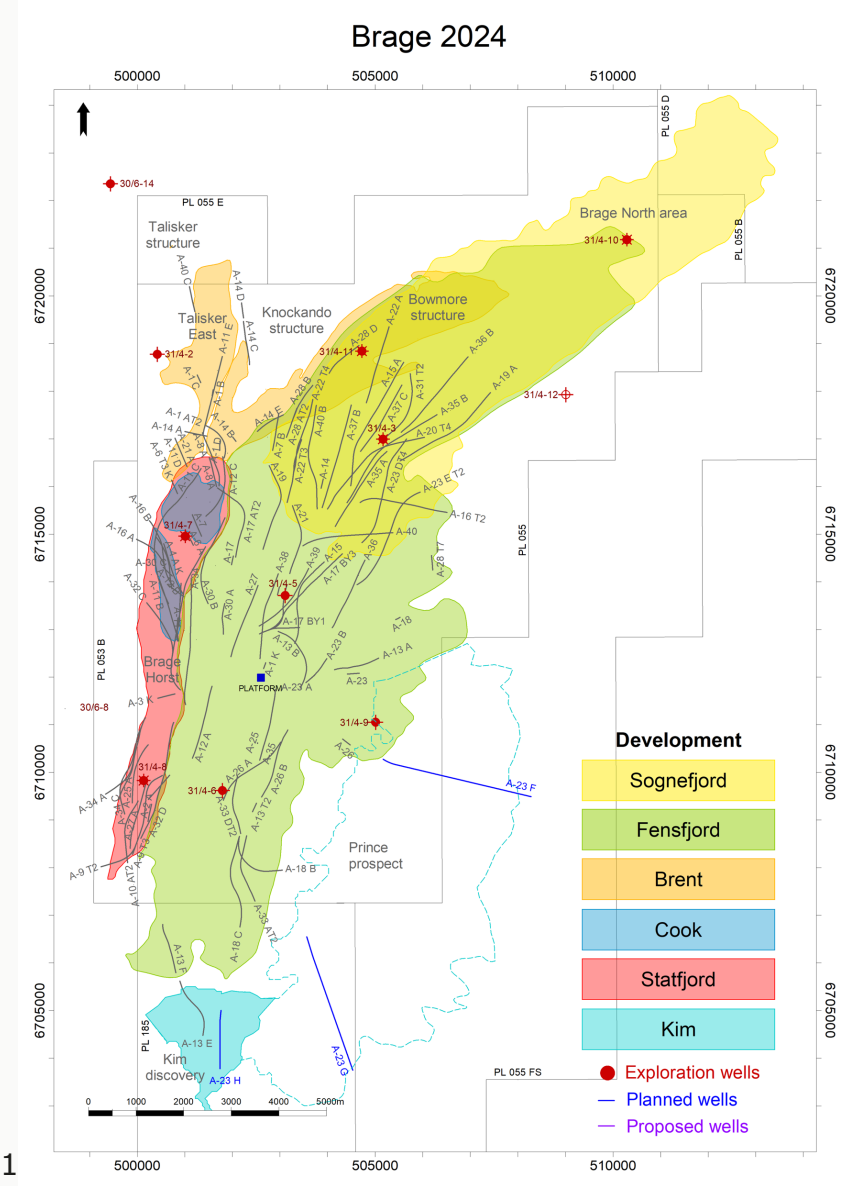
Galtvort



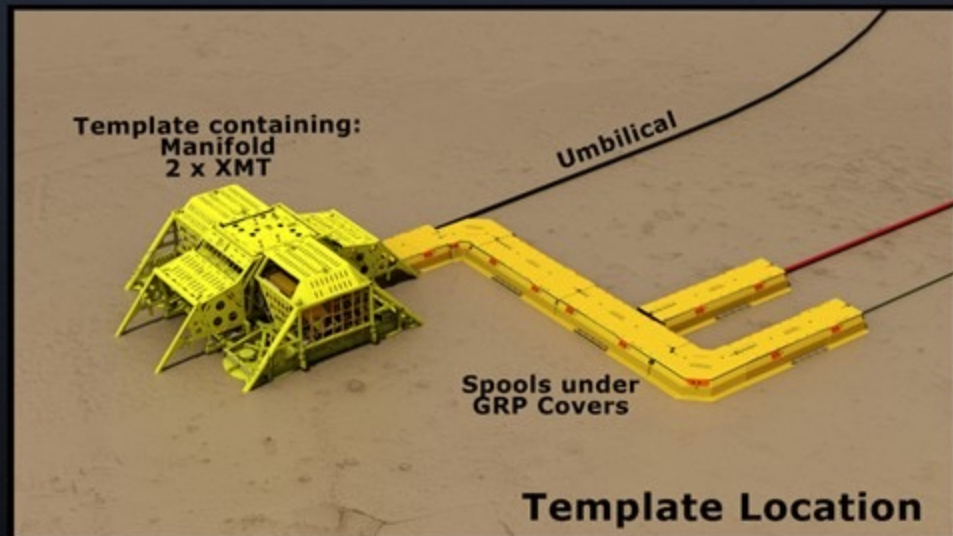
Brage – license area and catchment area



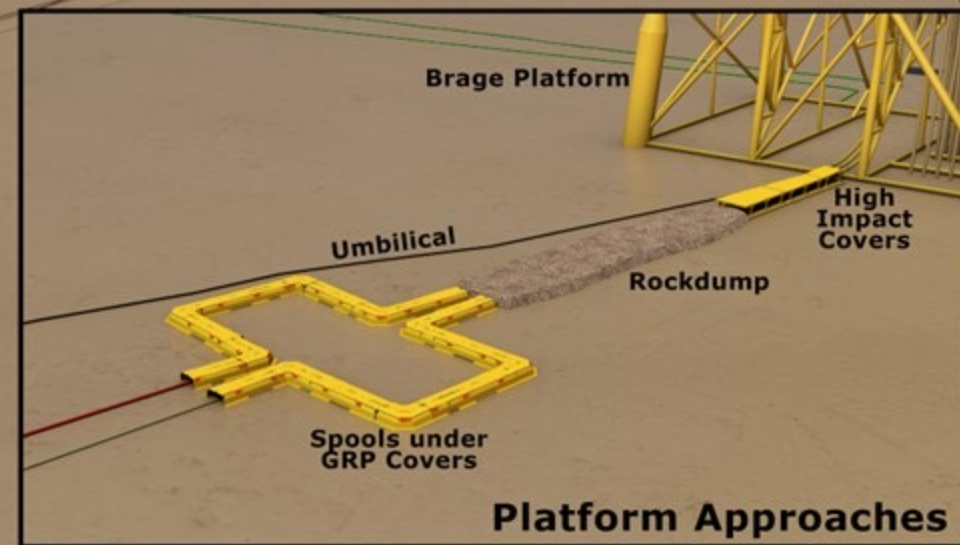
Brage – license area and catchment area



Bestla – PL 740

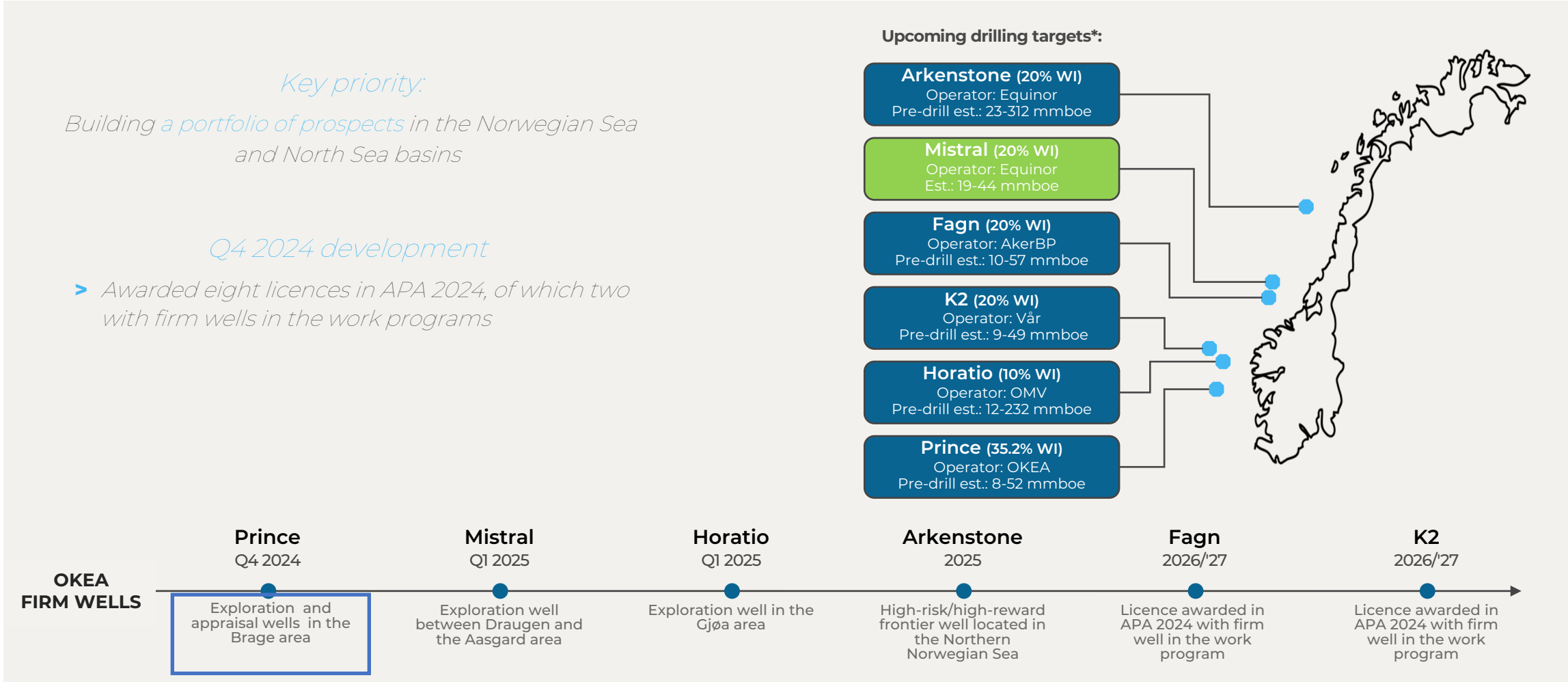


31/4 Brage Platform



Exploration activities

Long-term exploration ambition: Drill up to four exploration wells per year



OKEA ASA – Discovery confirmed in Mistral exploration well

(Trondheim, 4 March 2025) - OKEA ASA (OSE: OKEA) announces a discovery in the PL1119 Mistral exploration well 6406/6-7S located in the southern Norwegian sea.

Preliminary estimates of recoverable oil equivalents are between 3 and 7 million standard cubic meters (MSm³), corresponding to 19 and 44 million barrels.



Takk for oppmerksomheten!

ooo

www.okea.no